

*Ellenvipro*



COMMITTED TOWARDS A BETTER ENVIRONMENT

# ORGANIC WET WASTE COMPOSTERS



Telefax : 080 2663 6127 Mob: +91 9480691707 / +91 9448089282 / +91 9480691700  
email: ellenvipro Equip@yahoo.co.in / info@ellennvee.com Web : www.ellennvee.com

## About Us:

*Ellenvipro Enviro Equipments Pvt. Ltd.*, is a Bangalore based company, engaged in Design, Manufacturing, Consultancy, Engineering and execution of **ELLENVIPRO** mechanical organic waste composting machinery plants with professionals, specialists and engineers who have more than 25 years of experience in the environmental field, catering the needs of Industries, Hospitals, star hotels, resorts, group housing and community requirements under one roof for all environmental needs like water and waste water reclamation and re-use, organic composting, air pollution monitoring, etc.,. Ellenvipro group have designed, installed and commissioned more than 240 Enviro friendly projects over last 25 years, for various categories of organizations and are successfully functioning.

## 5R's

Before discarding anything as a waste, one should remember the following **5R's** of environmental protection viz. Refuse, Reduce, Reuse, Recycle and Recover.

- Refuse** | Refuse to buy unwanted things, which ultimately result in generation of some or the other kind of waste (either in the form of its packing or not-using the item itself etc.)
- Reduce** | Try to reduce the waste generation, to as low as reasonably practical
- Reuse** | Before throwing anything as a waste, try to make optimum usage of it, by way of repeated use
- Recycle** | Share the unwanted items with others, who are in need of the same
- Recover** | When any or all of the above options are not workable, try to recover the useful components from such items for use in a new product or recover the possible portion by way of making it as a manure or recover energy by suitable safe methods (ultimate choice).

With the **5-Rs** concept in mind, we at **Ellenvipro Enviro Equipments Pvt. Ltd.** have launched "**ORGANIC WET WASTE COMPOSTERS**", under the brand name **ELLENVIPRO MECOMP** which would convert the biodegradable solid waste into useful organic compost.

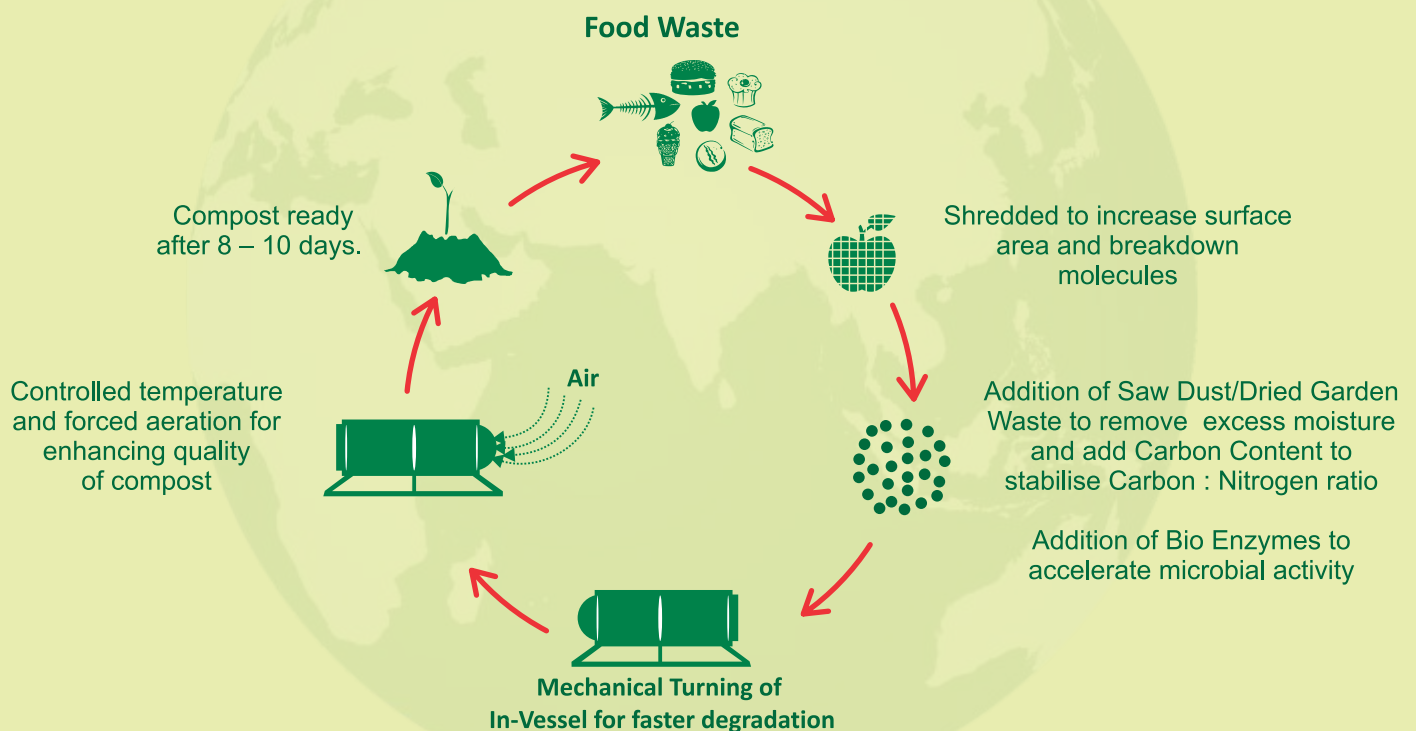




## Other Waste Convertors Vs Ellenvipro In-Vessel Composter Comparison

Parameter	Rack & Crate System	24Hrs Converter	Ellenvipro In-Vessel Composter
Technology	Built on Manual Rack & Crate Methodology	Built on direct heating & Incineration Technology	Built on worldwide proven In-Vessel Technology
Space Requirement	More	Moderate	Moderate
Power Consumption	Less	Very High	Medium
Type of System	Conventional	Modern	Advanced
Man-Power Requirement	3 Person	1 Person	1 Person
Time Taken for Curing	15-18 Days	1 Day through direct heating	8 days continuous process under controlled air, temperature & bio enzyme loading
Process Type	Batch Process	Continuous but cannot overload	Continuous and can overload
Influence of external environment on the composting cycle	High	None	None
Noise during operation	Moderate	Moderate	Moderate
Odour problems (If left unattended)	High	Almost nil	Almost nil
Possibility of expansion of curing system	Possible	Not possible	Modular expansion possible
Compost Turning	Manual	Mechanical	Mechanical
Quality of Compost	Good	Average as heating removes most of the nutrients	Excellent – Meets norms of CPCB & MOEF
Compost Output	40 – 60% as it is manually treated	Only 10% as most of the waste is burnt and remaining 10% is Carbon Ash	40 – 60% as it is digested and treated to produce quality compost
Type of waste processing	Cannot take in hard organic substances	Cannot take in hard organic substances	Can take all hard organic substances including dried garden waste

## ELLENVIPRO IN-VESSEL COMPOSTER



The above automated process takes off almost 15 days from the conventional or natural composting process, which is how our compost is ready in 8 – 10 days.

## Features of Ellenvipro Organic Wet Waste Composter

Ellenvipro OWWC is a fully automated time based machine which converts the biodegradable domestic solid waste (BDSW) into useful compost over a period of 8 days and a continuous process thereafter.

- Capability of Manufacturing 50Kgs - 1Ton per day capacity composter in intervals of every 50Kgs and 100Kgs
- Approx. 60% of input is taken out as compost and the same can be used or resold for agricultural and horticultural requirements
- Requires 50% less power to operate compared to all other existing fully automatic waste composters which in turn saves on running cost
- Indigenous make with dedicated manufacturing facility in Bengaluru
- All spares are locally available making its maintenance hassle free
- Requires less space
- No odour and insect nuisance
- Less maintenance, easily operated by unskilled operators
- Takes organic waste including Bones, coconut shells, mutton/chicken/Fish pieces, corn cobs and small twigs
- Automated time based machine reduces manual intervention and requires less labour
- The compost produced can be directly used for Gardening and Agriculture without further drying
- Least environmental impacts
- Scalable and easy modular expansions

### Our group has the facilities to:

- ✦ Design & Supply of Agricultural Composting Machinery & Related Equipments
- ✦ Design, Supply, Installation & Maintenance of Solid Waste Treatment plants & Environment Treatment plants
- ✦ Design, Manufacture, supply & installation of Water, Waste Water & Sewage Treatment plants
- ✦ Operation & Maintenance of Water, Waste Water & Sewage Treatment plants
- ✦ Operation & Maintenance of Organic Waste Composting plants







1. Precautionary segregation



2. Segregated waste ready to be loaded

3. Wet waste & Bulking Material loading



4. Waste Shredding



6. Compost after 8 Days



5. Curing Chamber

**Government of Karnataka  
Department of Horticulture**

Bio- centre, P.O. Box 7648, Hulimavu, Bangalore-76  
Phone(080) 6582784, 6582775, Fax: (080) 6584906

No: DH: BIOTECH: SADH (PN): AHO: 2:2016-17

**ANALYTICAL RESULTS OF ORGANIC MANURE**

Date of receipt: 26-05-2016

Date of report: 14-06-2016

1. Name of the manufacturer :  
2. Sample sent by : Ellenvipro Enviro Equipment Pvt.Ltd.  
#88,37<sup>th</sup> 'B' Cross, 26<sup>th</sup> main,9<sup>th</sup> Block,Jayanagar, Bangalore.  
3. Name of the Sample : Compost  
4. Sample number : 055

SL No	Tests Parameter	Requirements Standard	Results
1	Colour	Brown to Black	Brown
2	Odour	Absence of Foul Odour	No foul odour
3	Moisture % by weight Maximum	15.0-25.0	19.2
4	p <sup>H</sup>	6.5-7.5	7.5
5	Conductivity (as dsm <sup>-1</sup> ) not more than	4	4.2
6	Total Organic carbon (%) by weight, minimum	18.0	44.19
7	Total Nitrogen (as N) % by weight, minimum	0.5	1.97
8	Total Phosphorous (as P <sub>2</sub> O <sub>5</sub> ) % by weight, minimum	0.5	1.21
9	Total Potash (as K <sub>2</sub> O) % by weight minimum	0.5	0.71
10	C:N ratio	<20	22:1
11	Bulk density maximum	<1	0.73
12	Particle size after passing through 4mm IS sieve min	Not less than 75%	90%
13	a)Iron (mg/kg)	-	6351.75
	b)Manganese (mg/kg)	-	216.8
	c)Copper (mg/kg), Max	300.00	15.95
	d)Zinc (mg/kg), Max	1000.00	65.95
	e)Lead (mg/kg), Max	100.00	-
	f)Cadmium (mg/kg), Max	5.0	-
	g)Chromium (mg/kg), Max	50.0	-
	h)Nickel(mg/kg),Max	50.0	-
	i)Calcium(Ca)% by weight	-	-
	j)Magnesium(Mg)% by weight	-	-

Note: The Sample meets quality standards.

*K. Srinivas*  
Senior Assistant Director of Horticulture  
(Plant Nutrition)  
Hulimavu, Bangalore - 560 076

# Clients



Jalahalli Housing Complex - 250Kgs



Delivering Excellence through People  
Project UIDAI Adhaar - 100Kgs



Tech Square - 800Kgs 2Nos

**Sri Venkateshwara Developers**  
Supreme Park - 300Kgs



Pinnacle Heights - 250Kgs  
Ashed Valmark



Vihās - 50Kgs



Retreat - 150Kgs



Abodh - 100Kgs



Shelters - 100Kgs



Ananda - 100Kgs

Recipient of National Industrial Excellence Award and QUALITY BRANDS INDIA - 2016 - 2018



*Ellenvipro Enviro Equipments Pvt. Ltd.*

#88, 37th 'B', Cross, 26th Main Road, 9th Block, Jayanagar, Bangalore 560 069  
Telefax : 080 2663 6127 Mob: +91 9480691707 / +91 9448089282 / +91 9480691700  
email: ellenvipro equip@yahoo.co.in / info@ellennvee.com Web : www.ellennvee.com